

Range Servant 38K Golf Ball Washer



Figure 1: 38K Ball Washer

Parts List

Your ball washer comes with the following parts:

Part Number	Description	Quantity
38K10	Wire Hopper	1
38K11	Rubber Mount	4
38K12	Vibrator Motor	1
38K13	Track Entrance Divider	1
38K05	Drain Elbow w/Plug	1

Tools

You will need the following tools:

Tool	Quantity	Purpose
7/16" Wrench	2	Attaching vibrator and entrance divider.
7/16" Socket and Ratchet		Installing rubber mounts and wire hopper.
1/2" Wrench	1	Some rubber mounts require this to install.

Assembly

1. Assembly Instructions: See-attached sheet.

- A. Install the four rubber mounts on the two black top brackets. No washers are required on the lower threaded bolts, just nuts. Place one washer on each of the top threaded bolts from each rubber mount.

THE FOLLOWING IS CRITICAL TO ENSURE PROPER BALL FEEDING!!!!

- Place hopper basket on top of the four rubber mounts exactly (7) seven openings (spaces) from the bottom of the hopper as per diagram.
- Make sure that the 4-1/2" x 7" rectangular hole in the bottom of the wire hopper basket aligns with the hole in the top of the washer top.
- Put second washer on threaded bolts over the hopper then secure with nuts. Just snug all nuts.

B. To double check the above procedure:

Looking into the top of the hopper you should observe the following:

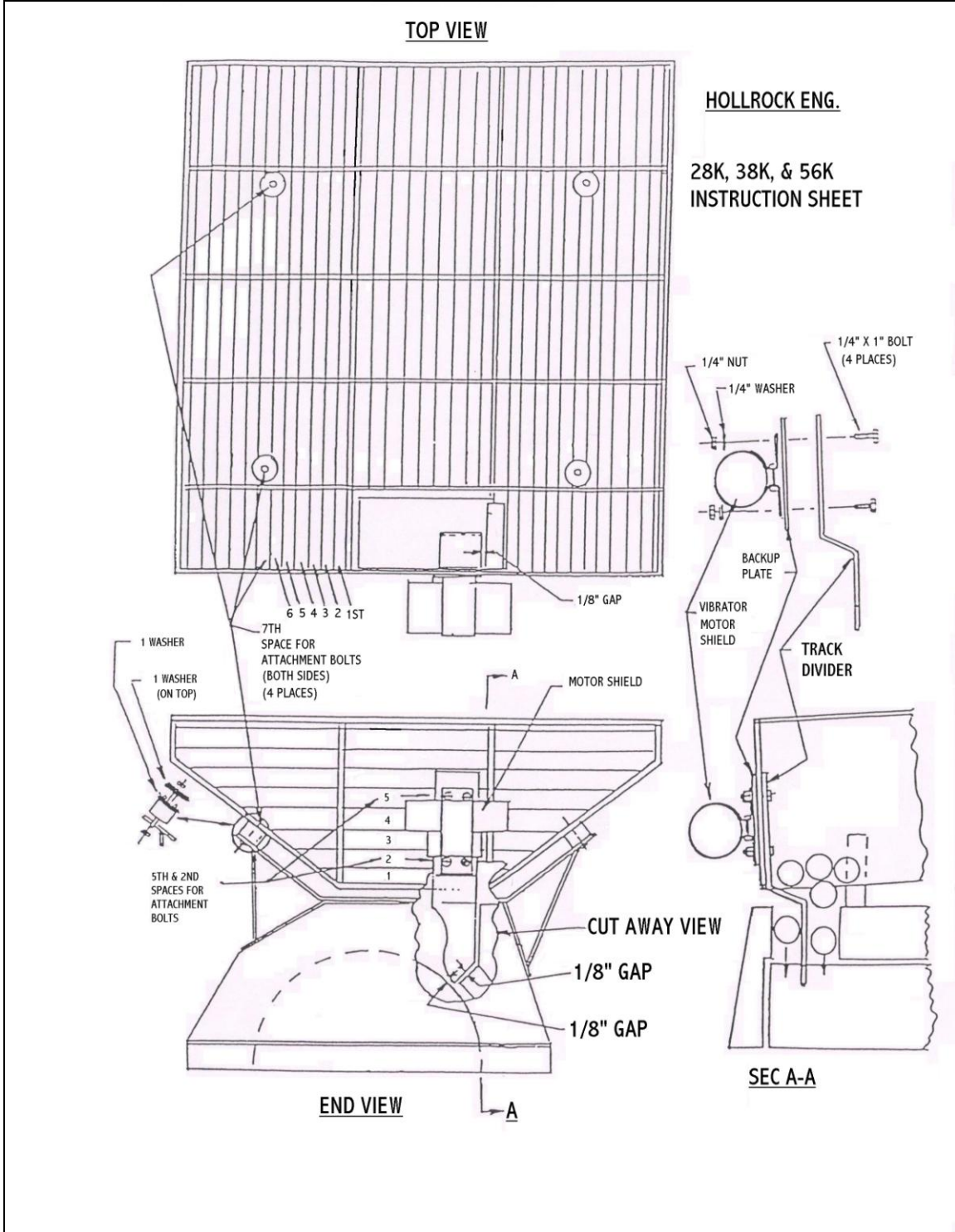
1. Nut 2. Washer 3. Hopper Basket 4. Washer
5. Rubber Mount 6. Black Top Bracket 7. Nut

C. Attach the stainless steel track divider to the wire hopper, with the back-up plate fitting between the vibrator motor and the wire hopper connecting to the stainless steel track divider as shown in the attached sheet, SEC A-A. Tighten all nuts securely, being careful not to over tighten them.

Make sure that the bottom two bolts are positioned in the (2nd) second slots of the wire hopper and the top two bolts are positioned in the (5th) fifth slots of the wire hopper as shown in the attached sheet.

The stainless steel track divider should be !!CAREFULLY!! positioned 1/8" to 3/16" above the washer's brush and 1/8" away from the inner wall, again as shown in the attached sheet. Be sure there is ample space on both sides of the track for the golf balls to enter each track. IMPORTANT: Track divider should never touch the washer's brush.

!!!!TO AVOID PERSONAL INJURY!!!!
DO NOT INSERT HANDS IN TOP OF THE BALL WASHER'S TRACK DIVIDER
OPENING WHILE IN OPERATION



Operation

1. Operating Instructions

- A. It is recommended to place the professional ball washer under complete cover or indoors whenever possible. Also try to locate the washer on level ground. It is also recommended to rinse the washer with clean water to remove any debris that may be left from manufacturing.
- B. Fill the lower washer tank with water approximately 2" from the top.
- C. If desired, add a small amount of Ball Bright to the water.
- D. To help minimize corrosion, empty the water from the tank and rinse thoroughly when not in use. This will also promote a longer brush life.
- E. No nuts are needed to hold the brush in place. It is designed so the bearings just sit on the threaded bolts. Should harmful debris enter the machine, the brush will be able to move freely preventing damage to it or the washer motor.
- F. Keep the motor and all wires as dry as possible. Avoid prolonged storage in direct sunlight. Protect the washer tank from high impact, i.e.; golf balls.
- G. Drain water in freezing temperatures.
- H. Use a 20 amp 115 volt 60 Hz power supply. A three-prong power receptacle with an electrical ground is required.
- I. As always, exercise caution when operating any machinery.

Troubleshooting

The following troubleshooting guide is to help diagnose any problems you may have with your RS-38K Ball Washer. Your washer will give you many years of service if maintained properly. Remember, keep machine clean and replace any worn parts immediately.

At no time should you try to push balls into machine with a broom handle, golf club shaft or any other object. If balls are backing up, find the problem and repair.

If you have a problem with the motor, you will need the motor's model number. This can be found by removing two (2) rivets or screws on back of motor shield to read the tag on the side of the motor.

To remove the brush from your washer for cleaning and maintenance, hold each end of the brush and lift straight up. To reinstall the brush, line slots up on coupler and place brush back in machine, lining bolts up with holes in bearings.

If balls are not feeding properly, understand the following procedure to diagnose where the problem exists, then refer to the trouble shooting chart. To determine where the problem is, stop the feeding of balls and allow the balls to clear the washer. Turn off the washer and clear any loose balls at the entrance. Slowly lift the cover and check for backed up balls. Take note of where the lead ball is stopped. Proceed to the proper step from following list:

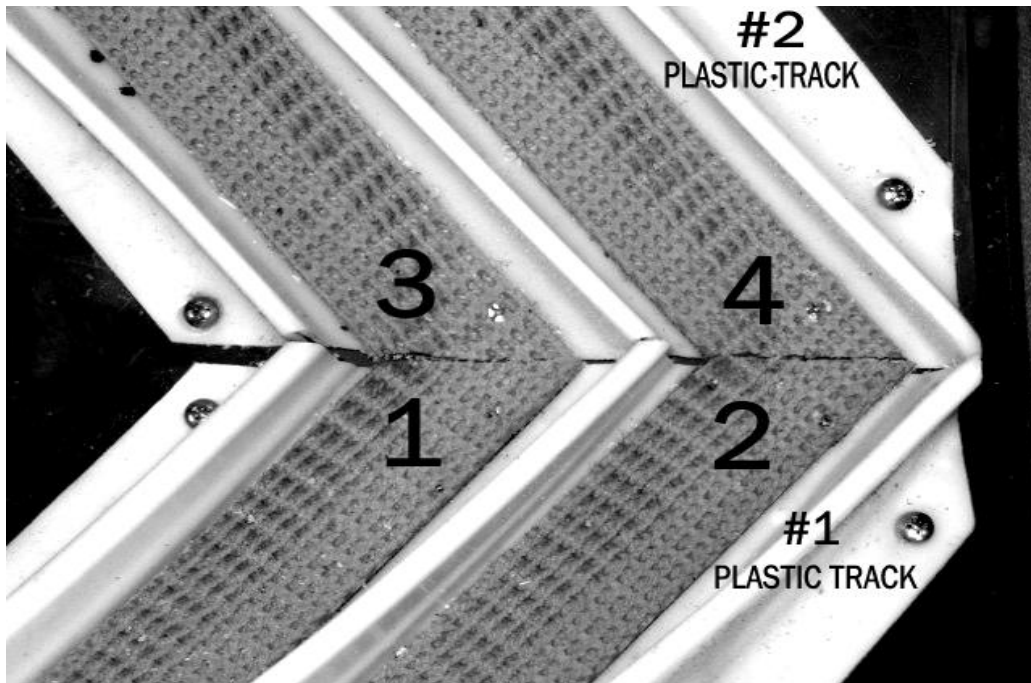
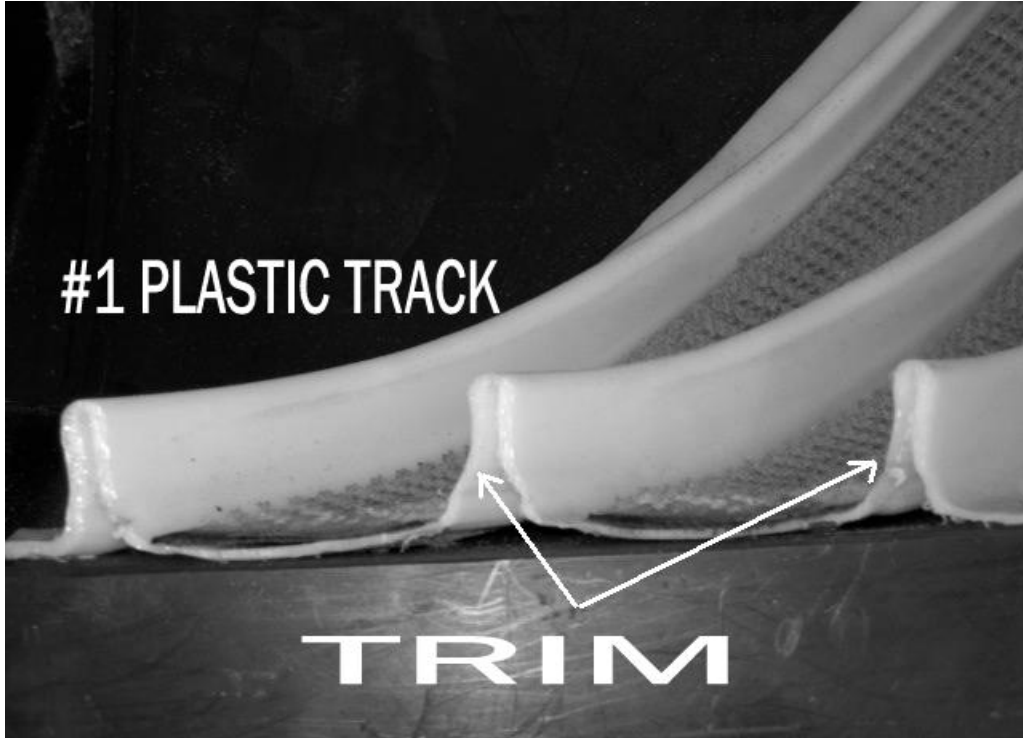
- 1 – Ball entrance
- 2 – Bottom of washer under brush
- 3 – Going from bottom tub to cover at back of machine
- 4 – Ball exit
- 5 – In hopper basket

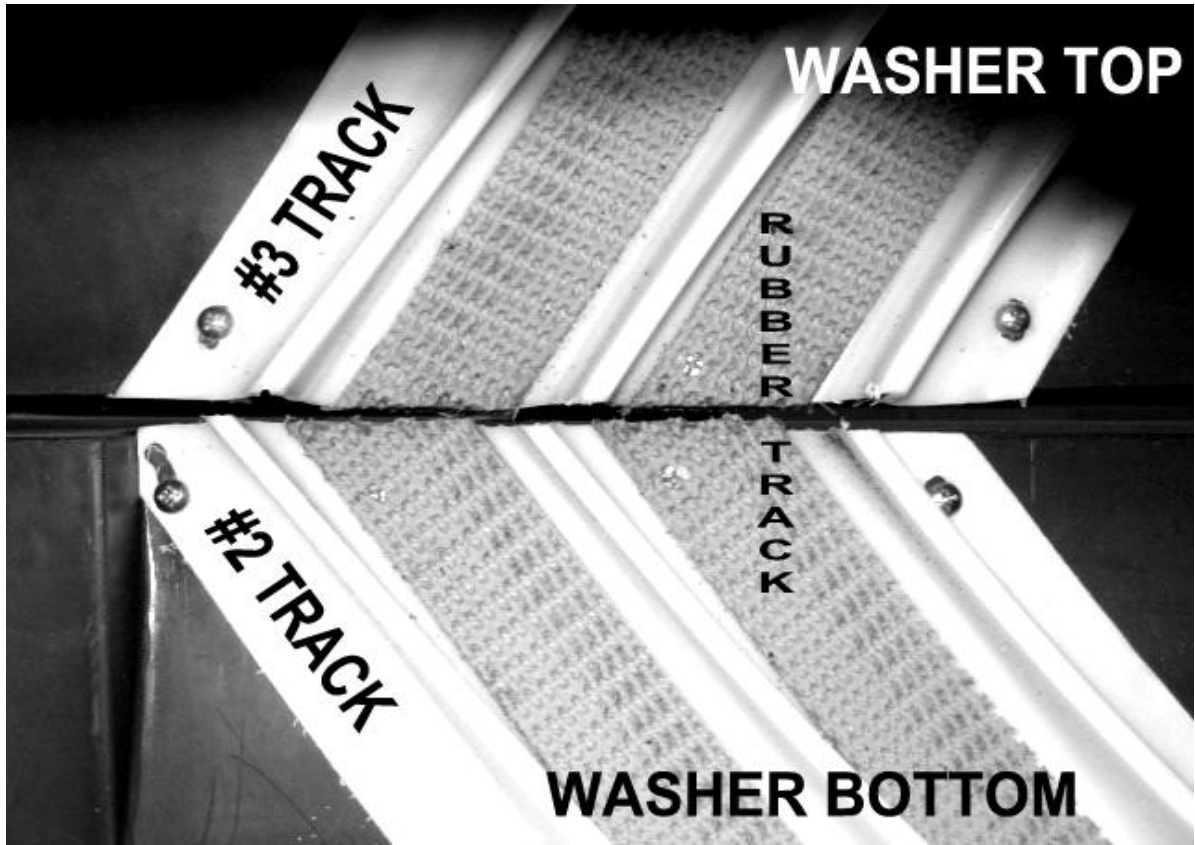
Trouble Shooting Chart

Problem	Reason	Solution
Lead ball stopped at entrance to bottom tank	<ol style="list-style-type: none"> 1. Entrance track divider may be too close to side of opening 2. Beginning of rubber tracking may not be tapered 3. Balls may be catching on white plastic track 	<ol style="list-style-type: none"> 1. Adjust divider by pushing on it so there is enough clearance on either side for balls to pass through freely. See figure A-A 2. With small grinder or sharp knife, shave top edge of tracking. Make sure plastic is tight against tank 3. White plastic may need to be trimmed. See figure 1
Lead ball stopped at bottom of washer under brush	<ol style="list-style-type: none"> 1. Rubber tracking is misaligned 2. White plastic is misaligned 	<ol style="list-style-type: none"> 1. Tracking should be flat and butted against edge of next piece. A small gap is permissible 2. Plastic track joint should be offset. See figure 2. If track is worn, replace it
Lead ball stopped at transition between top and bottom at back of washer	<ol style="list-style-type: none"> 1. Rubber tracking is misaligned 2. White plastic track misaligned 3. The #2 white track is not lifted away from tub 	<ol style="list-style-type: none"> 1. Tracking should butt slightly and lay flat 2. Make sure track pieces are offset. See figure 3. If track is worn, replace it 3. Install plastic track lifter between track and tank
Lead ball stopped at ball exit	<ol style="list-style-type: none"> 1. Aluminum exit chute bent 2. Exit chute too far away from brush 3. Exit divider (28K only) may be bent 	<ol style="list-style-type: none"> 1. Fix or replace 2. Chute should be approximately 3/16" from brush. Drill out rivets and reposition if necessary 3. By pushing on end of divider where it joins white plastic, adjust so balls fit through freely on each side

<p>Balls won't feed from hopper</p>	<ol style="list-style-type: none"> 1. Foreign objects and debris 2. Entrance divider not adjusted 3. Vibrator motor not working 	<ol style="list-style-type: none"> 1. Clear ball path 2. Adjust as per instructions 3. check for power, replace vibrator motor
<p>Water leaking where drain attaches</p>	<ol style="list-style-type: none"> 1. Threads not sealed 2. Fitting in bottom of washer cracked 3. Water leaking at drain plug 	<ol style="list-style-type: none"> 1. Wrap threads with plumbers tape 2. Contact company 3. Wrap threads with plumbers tape or replace gasket on plug
<p>Motor runs but brush doesn't turn</p>	<ol style="list-style-type: none"> 1. Coupler may be loose on motor 2. Coupler on brush shaft may be loose 3. High speed gear in motor is broken 4. loose or broken wire 	<ol style="list-style-type: none"> 1. Check motor coupler. Coupler is held in place by a woodrif key and allen head set screw. Make sure key is present and set screw is tight 2. Replace bolt or split pin 3. Replace gear or motor 4. Tighten / replace wire
<p>Motor won't run</p>	<ol style="list-style-type: none"> 1. No power 2. GFCI in switchbox is tripped 3. GFCI outlet is defective 4. Motor burned out 	<ol style="list-style-type: none"> 1. Check to see if washer is plugged in and power turned on 2. Push reset button 3. Replace outlet 4. Replace motor
<p>Balls not getting cleaned</p>	<ol style="list-style-type: none"> 1. Brush worn 2. Rubber track worn 3. Wash water dirty 4. Not enough pressure between ball and brush 	<ol style="list-style-type: none"> 1. Reverse or replace brush 2. Replace rubber track 3. Drain water and refill with clean water 4. Put lifter under rubber track

View looking down at the ball track in the lower tank.



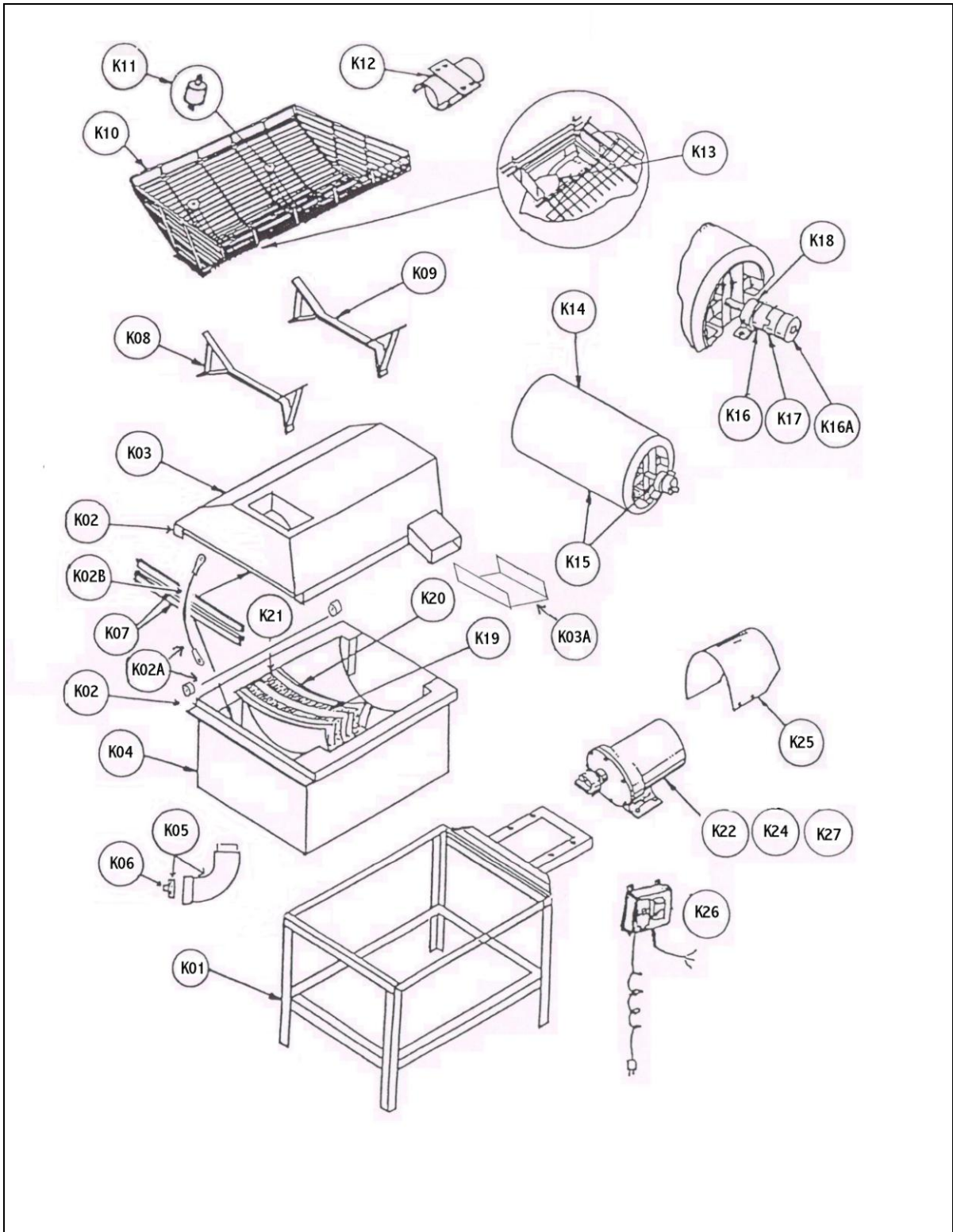


If you have any questions about your washer, contact:

Range Servant America, Inc
3000 Center Place
Ste 300
Norcross, GA 30093

Phone: 800-878-8050

Email: support@rangeservant.us
sales@rangeservant.us



Washer parts diagram

38K Commercial Washers Parts List

Part #	Description
38K01	Frame for 38K
38K02	Hinges, Set Complete (includes hinges, s/s rod, and cable)
38K02A	S.S. Rod & Cable Kit
38K02B	Cable Only w/screws
38K03	Tank Top
38K03A	Aluminum Exit Chute
38K04	Tank Bottom
38K05	Drain Elbow, w/drain plug
38K06	Drain Plug, only
38K07	Seal Strips, set
38K08	Hopper Support Bracket, short, left
38K09	Hopper Support Bracket, tall, right
38K10	Wire Hopper
38K11	Rubber Hopper Mounts (1/2" tall)
38K12	Vibrator Motor complete w/bracket and cover
38K13	Track Entrance Divider
38K14	Brush, only
38K15	Brush, complete w/shaft, bearing and coupler
38K16	Coupler, aluminum
38K16A	Coupler, aluminum w/set screw
38K17	Coupler, Plastic
38K18	Bearing, each
38K19	Rubber Track Liner, w/screws, complete
38K20	Plastic Tracks, complete set
38K20A	Plastic Tracks, uppers and bottom front
38K20B	Plastic Tracks, bottom rear
38K21	Track Lifter
38K24	38K Gear motor w/aluminum coupler
38K24A	38K Gear motor Only
38K25	Motor Shield for 38K, Dayton motor (22" X 11")
38K26	GFI Switch & Cord complete
38K26A	GFI Switch Cover