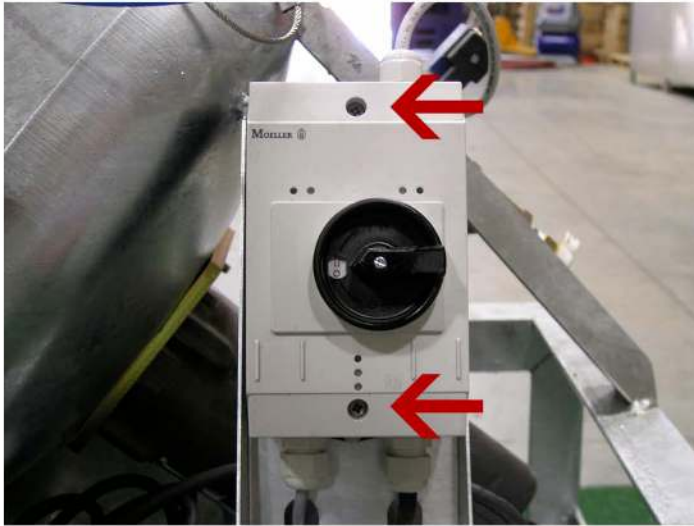


Changing a Ball Washer Motor

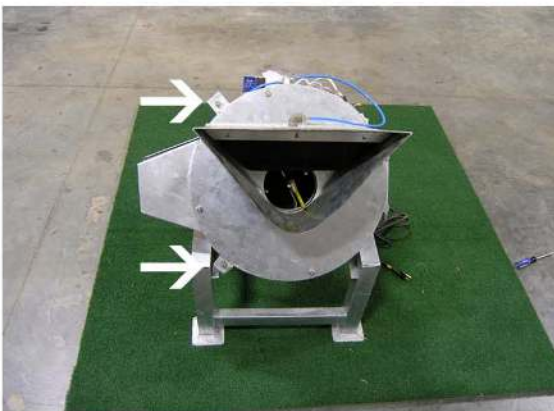
Overview: To remove and replace a Ball Washers Rubber Plate and ultimately the Motor.

Tools Needed: 6mm Hex Wrench, 13mm Deep Socket Wrench (with extension), 13mm Wrench (preferably ratcheting)
Medium Screwdriver

Step 1: Turn the washer off and DISCONNECT THE POWER. Unscrew the plastic housing for the on/off switch in the two locations indicated below on the left; revealed will be the switch with wiring shown on the right. Remove the blue, brown, and yellow wires which are housed within the grey cable that connects to the motor.



Step 2: Remove the water drawer basin from the front of the machine. Using the 13mm Deep Socket Wrench, remove the two screws which fasten the door and open it.



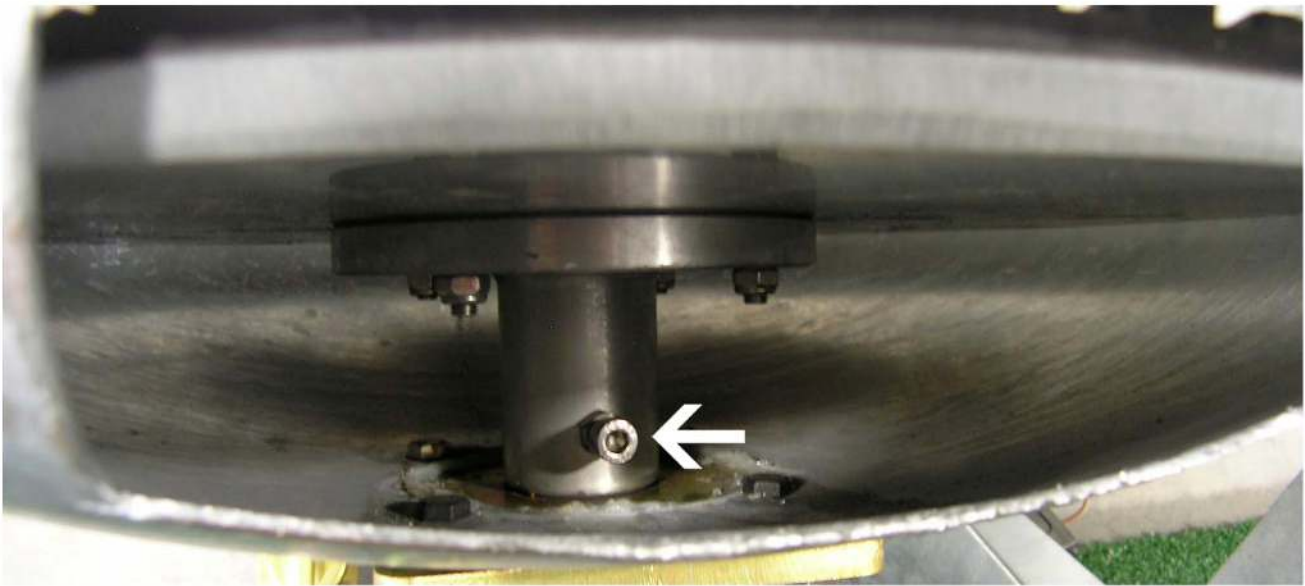
Changing a Ball Washer Motor

Overview: To remove and replace a Ball Washers Rubber Plate and ultimately the Motor.

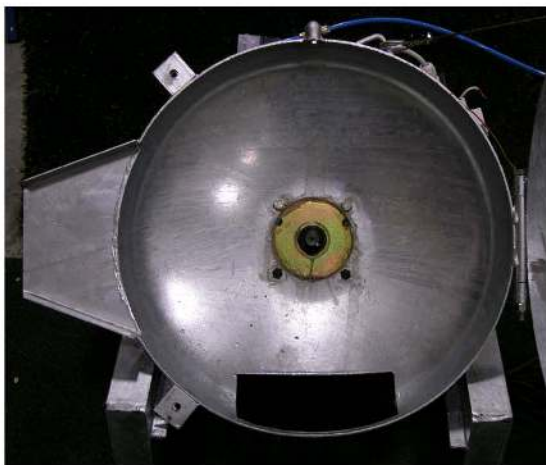
Tools Needed: 6mm Hex Wrench, 13mm Deep Socket Wrench (with extension), 13mm Wrench (preferably ratcheting)
Medium Screwdriver

Step 3: Displayed below is the view of the back of the Rubber Plate. You can find this cutout window on the front of the machine, on the underside of the rim. Using the 6mm Hex Wrench and the 13mm Deep Socket Wrench with extension to loosen the screw and nut that secure the flange from the Rubber Plate to the motor.

NOTE: If you are unable to pull off the Rubber Plate and flange assembly from the end of the motor, use the 13mm Wrench to remove the four nuts that hold the Rubber Plate to the flange.



Step 4: At this point you should be able to pull off the Rubber Plate from the end of the motor.

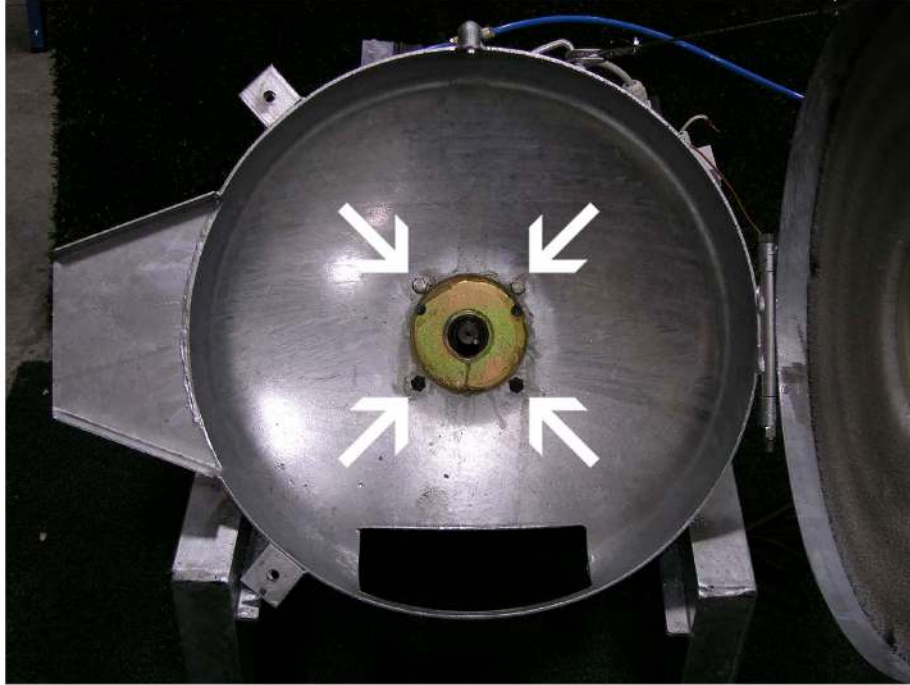


Changing a Ball Washer Motor

Overview: To remove and replace a Ball Washers Rubber Plate and ultimately the Motor.

Tools Needed: 6mm Hex Wrench, 13mm Deep Socket Wrench (with extension), 13mm Wrench (preferably ratcheting)
Medium Screwdriver

Step 5: Using the 13mm Socket Wrench remove the four screws which hold the motor to the washers frame.



Step 6: Using the 13mm Socket Wrench remove the four screws which hold the motor to the washers frame.



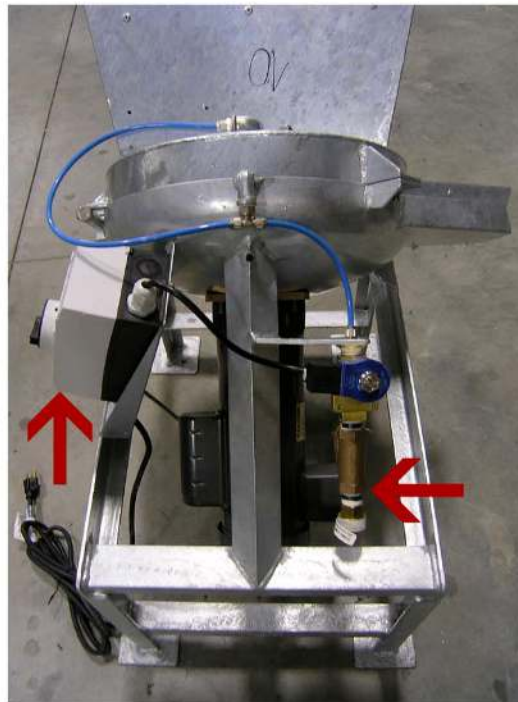
Changing a Ball Washer Motor

Overview: To remove and replace a Ball Washers Rubber Plate and ultimately the Motor.

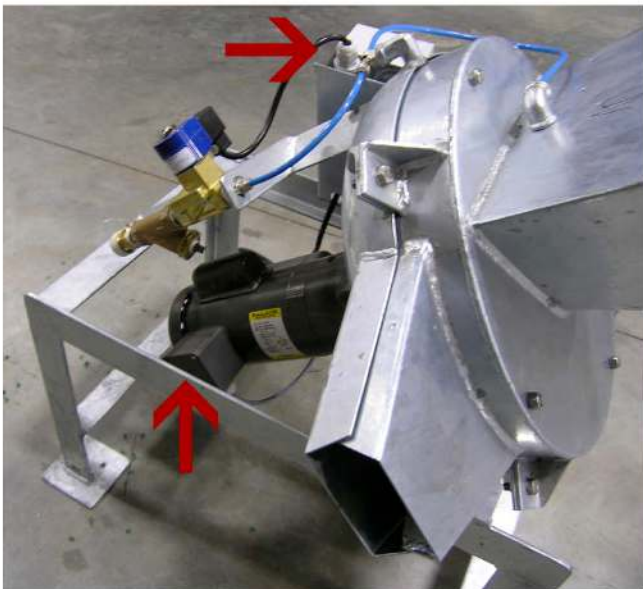
Tools Needed: 6mm Hex Wrench, 13mm Deep Socket Wrench (with extension), 13mm Wrench (preferably ratcheting)
Medium Screwdriver

NOTE: When installing the new motor to the mounting plate and washer it is strongly recommended that you use a bead of silicone to seal the point of contact preventing excess water from making its way back to the motor.

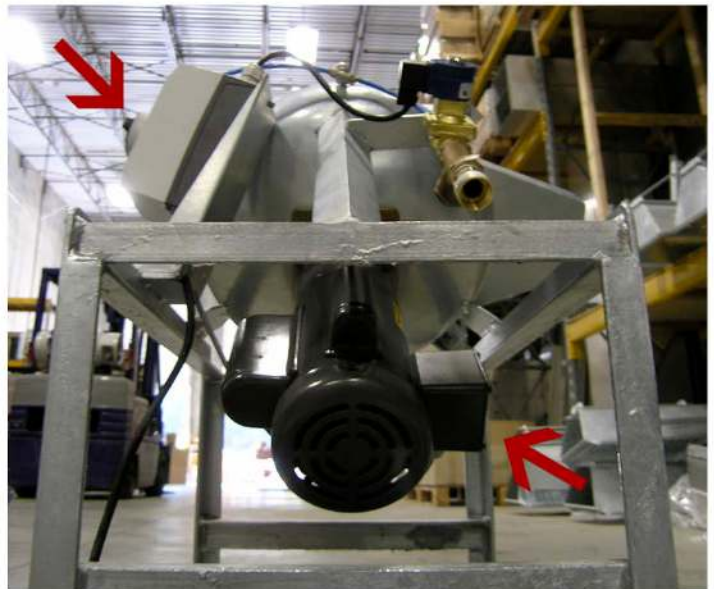
Step 7: Install the new motor and mounting plate to the washer where the power cord box located on the motor is on the opposite side of the washer than the on/off switch. Three examples are figured below.



View of the washer from above



View of the washer from the left



View of the washer from behind

Changing a Ball Washer Motor

Overview: To remove and replace a Ball Washers Rubber Plate and ultimately the Motor.

Tools Needed: 6mm Hex Wrench, 13mm Deep Socket Wrench (with extension), 13mm Wrench (preferably ratcheting)
Medium Screwdriver

Step 8: To reassemble the Ball Washer review these directions in reverse.

NOTE: On step 3 when dealing with the flange behind the Rubber Plate, please TIGHTEN using these standards:

Tighten the hex screw (A) first, then tighten the 13mm nut (B) using the 13mm Deep Socket Wrench

