

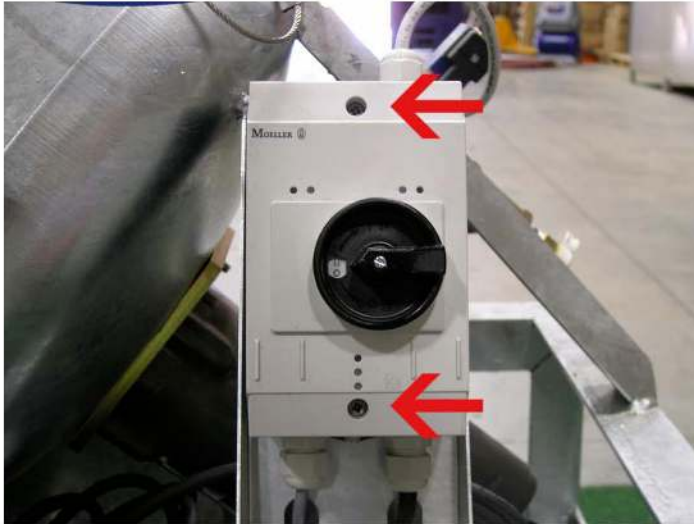
## Change Breaker

**Overview:** To change the breaker on a washer

**Tools Needed:** 1 large phillips head screwdriver, 1 flat head screwdriver

---

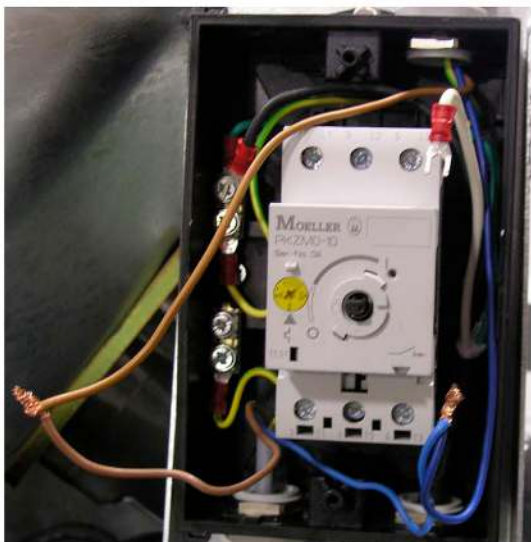
**Step 1:** Locate the on/off switch for the washer, unscrew the plastic housing in the two locations indicated below on the left, revealed will be the switch with wiring shown on the right



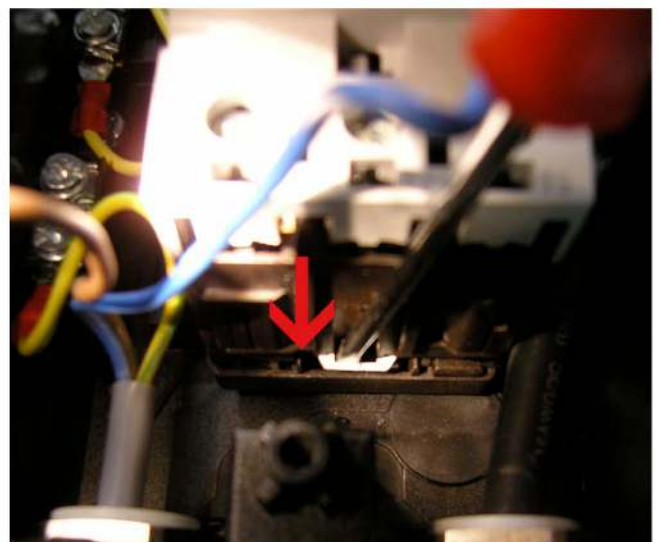
Exposed view of breaker



**Step 2:** Use a phillips head screwdriver to unscrew the wires from the slots leading into the breaker (left). Arrange a flat head screwdriver underneath the breaker to pull the release switch down (right) and pull the breaker out.



Release switch for breaker



## Change Breaker

**Overview:** To change the breaker on a washer

**Tools Needed:** 1 large phillips head screwdriver, 1 flat head screwdriver

---

**Step 3:** Insert the new breaker in housing and replace wiring using the diagram below



**Step 4:** Using the small phillips head screwdriver, adjust the dial to where the 8 and the arrow are aligned as demonstrated in the figures below. For optimal performance this dial should never be set below 8.

